

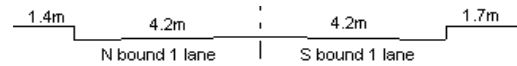
YEAR 2023

CORE STATION 5014

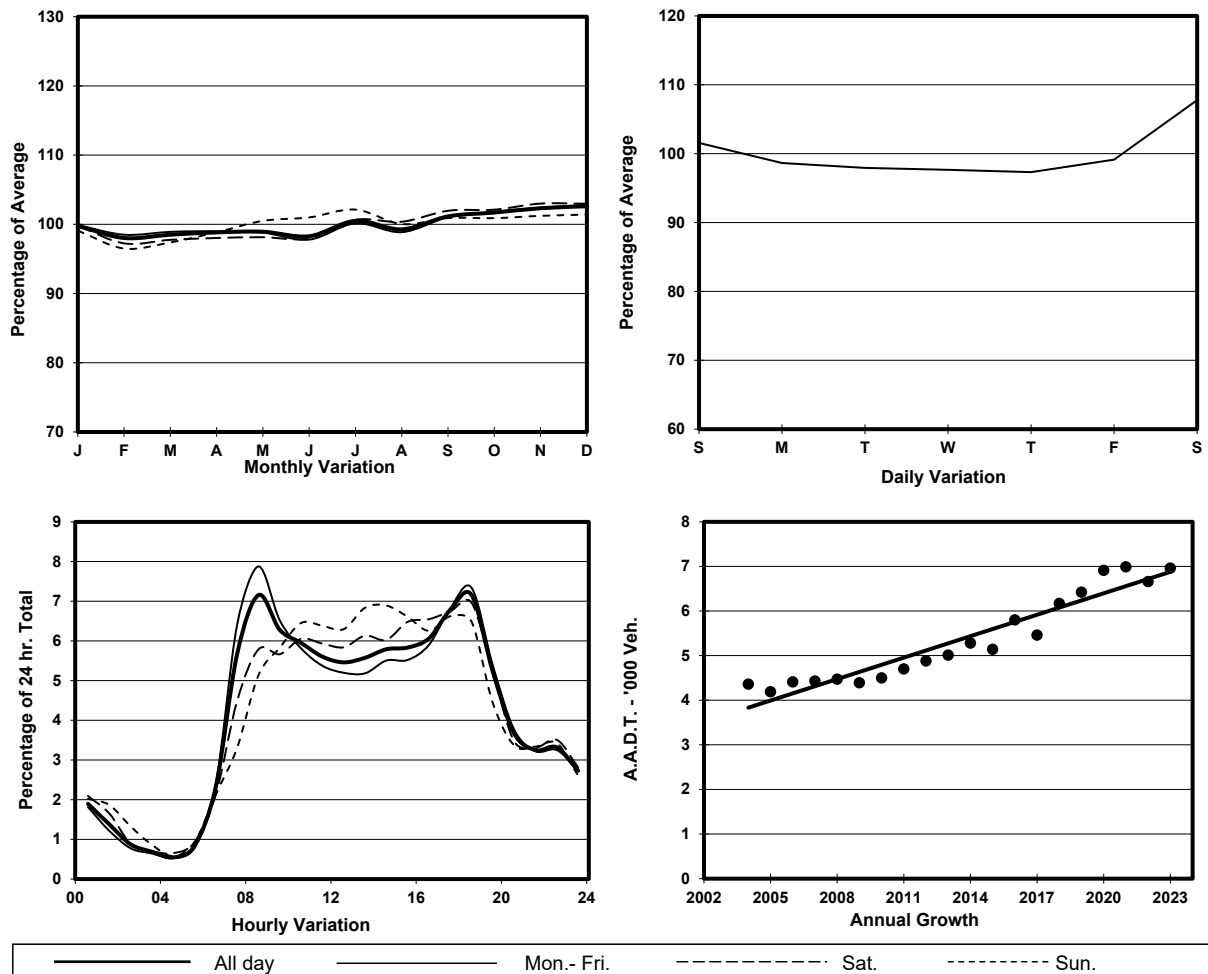
ROAD NETWORK MAJOR

ROAD TYPE RURAL ROAD

LINK ROUTE TWISK (from CHUEN LUNG to CHEUNG PEI SHAN RA)



1. TRAFFIC FLOW VARIATION AND GROWTH



2. TRAFFIC CHARACTERISTICS (BY DIRECTION)

Parameter	All - Day	Mon. - Fri.	Sat.	Sun.
SOUTH BOUND				
A.A.D.T.	3520	3460	3780	3540
R 12 / 24 - %	78.2	78.7	76.7	77.2
R 16 / 24 - %	90.2	90.5	90	88.7
AM Peak Hour	0800-0900	0800-0900	0900-1000	0900-1000
One-way flow at AM peak hour	320	370	240	200
T - % (AM)	-	0.2	-	-
PM Peak Hour	1800-1900	1800-1900	1800-1900	1800-1900
One-way flow at PM peak hour	250	240	290	260
T - % (PM)	-	0.4	-	-
Prop.of commercial vehicles - 16 hr.	-	1.9	-	-
NORTH BOUND				
A.A.D.T.	3440	3360	3720	3530
R 12 / 24 - %	68.3	68.2	68.5	68.9
R 16 / 24 - %	87.3	87.7	86.2	86.6
AM Peak Hour	0900-1000	0900-1000	0800-0900	0900-1000
One-way flow at AM peak hour	200	200	210	210
T - % (AM)	-	0.6	-	-
PM Peak Hour	1800-1900	1800-1900	1600-1700	1700-1800
One-way flow at PM peak hour	250	260	250	220
T - % (PM)	-	0.3	-	-
Prop.of commercial vehicles - 16 hr.	-	2.3	-	-

3. OTHER INFORMATION AND COMMENT

4. Vehicle classification and occupancy - Monday to Friday

Time		Class of vehicle									
		Motor Cycle	Private Car	Taxi	Private LB	PLB	Goods veh.		Non Fr. Bus	Fr. Bus	
							Light	M & H		SD	DD
0700-0800	Pro	9.8	60.0	2.9	1.0	2.0	19.7	2.9	1.0	0.7	0.0
	Ocp	1.1	1.3	2.0	1.0	4.5	1.3	1.3	1.0	15.3	0.0
0800-0900 Peak hour	Pro	7.4	68.8	1.6	0.5	2.1	18.9	0.5	0.0	0.3	0.0
	Ocp	1.0	1.1	1.3	1.0	12.0	1.4	3.0	0.0	30.0	0.0
0900-1000	Pro	8.0	64.0	3.6	0.0	4.4	18.7	0.9	0.0	0.4	0.0
	Ocp	1.0	1.2	2.3	0.0	10.0	1.3	1.0	0.0	25.0	0.0
1000-1100	Pro	5.5	56.8	3.3	0.0	6.6	25.1	0.0	2.2	0.5	0.0
	Ocp	1.0	1.3	2.0	0.0	8.0	1.5	0.0	1.0	32.5	0.0
1100-1200	Pro	7.0	59.3	6.0	0.0	3.0	21.1	2.0	1.0	0.5	0.0
	Ocp	1.1	1.4	1.5	0.0	7.3	1.3	2.0	1.0	26.0	0.0
1200-1300	Pro	7.8	63.4	5.9	0.0	2.0	18.5	2.0	0.0	0.5	0.0
	Ocp	1.3	1.3	1.3	0.0	14.5	1.6	1.0	0.0	13.0	0.0
1300-1400	Pro	2.1	54.5	5.3	1.1	3.2	28.9	4.3	0.0	0.5	0.0
	Ocp	1.0	1.3	2.0	2.0	9.0	1.3	1.5	0.0	26.5	0.0
1400-1500	Pro	8.7	55.7	4.4	0.0	2.2	25.1	3.3	0.0	0.5	0.0
	Ocp	1.0	1.3	1.8	0.0	11.0	1.7	1.3	0.0	15.5	0.0
1500-1600	Pro	9.9	56.4	6.6	0.0	2.2	22.1	2.2	0.0	0.6	0.0
	Ocp	1.1	1.3	2.3	0.0	10.0	1.7	2.0	0.0	11.0	0.0
1600-1700	Pro	5.5	56.6	5.5	0.0	2.8	27.6	1.4	0.0	0.7	0.0
	Ocp	1.3	1.4	2.3	0.0	6.5	1.7	2.0	0.0	13.5	0.0
1700-1800	Pro	13.3	60.4	2.4	0.0	2.4	19.6	1.6	0.0	0.4	0.0
	Ocp	1.1	1.2	2.3	0.0	9.3	1.2	1.5	0.0	20.5	0.0
1800-1900	Pro	11.1	71.7	2.6	0.7	2.6	11.1	0.0	0.0	0.3	0.0
	Ocp	1.2	1.2	2.3	2.0	5.8	1.2	0.0	0.0	33.5	0.0
1900-2000	Pro	3.6	76.9	8.1	0.9	2.7	7.2	0.0	0.0	0.5	0.0
	Ocp	1.5	1.3	1.7	5.0	9.7	1.4	0.0	0.0	24.0	0.0
2000-2100	Pro	6.2	79.4	3.1	0.0	0.0	10.9	0.0	0.0	0.4	0.0
	Ocp	1.0	1.3	2.0	0.0	0.0	1.7	0.0	0.0	6.0	0.0
2100-2200	Pro	5.9	61.4	13.9	0.0	4.0	13.9	0.0	0.0	1.0	0.0
	Ocp	1.0	1.4	1.1	0.0	7.0	1.1	0.0	0.0	13.0	0.0
2200-2300	Pro	11.0	60.6	5.5	0.0	3.7	18.3	0.0	0.0	0.9	0.0
	Ocp	1.0	1.4	1.3	0.0	3.5	1.4	0.0	0.0	6.5	0.0
16 hours	Pro	7.9	63.5	4.5	0.3	2.8	18.9	1.3	0.2	0.5	0.0
	Ocp	1.1	1.3	1.8	2.2	8.6	1.4	1.6	1.0	19.8	0.0

Legend: Pro. Proportion of vehicles in % (Sum may not add up to 100% due to figure rounding)*

Ocp. Average occupancy of vehicles including both driver and passengers*

M&H Medium and Heavy

* All traffic data are collected from combined bounds